

## PAROC Marine Wired Mat 100



Certification Number VTT-C-5818-15-10 / Technical Research Centre of Finland (VTT)  
Short Description Stone wool wired mat. Also possible to use with facings AluCoat, G1, G2 and G3. See "Facings".  
Application Fire insulation on ships.

As per:  
Type-Examination (Module B) certificate No. VTT-C-5818-15-10 issued by VTT.

Nominal Density 100 kg/m<sup>3</sup>

Maximum service temperature for PAROC Marine Wired Mat 100 is 660°C. PAROC stone wool products are capable of withstanding high temperatures. The binder starts to evaporate when its temperature exceeds approximately 200°C. The insulating properties remain unchanged, but the compressive stress weakens. The softening temperature of stone wool products is over 1000°C.

### Dimensions

Dimensions	
Width x Length	Thickness
Width 500/600/900/1000 mm, length 2000 - 8000 depending on thickness. mm	30 - 120 mm
Standard EN 822	Standard EN 823

### Packaging

Package Type Plastic Packs on Pallet

### Fire Properties

Description	Value	In accordance with
Reaction to Fire, Euroclass	A1	EN 13501-1
Marine Fire Classification	Non-Combustible	IMO FTP Code Part 1

### Thermal Properties

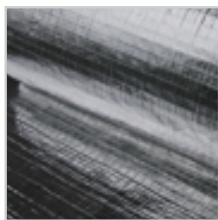
Thermal Conductivity (values announced by manufacturer)		
Description	Value	In accordance with
Thermal Conductivity in 10 °C, $\lambda_{10}$	0,039 W/mK	EN 12667
Thermal Conductivity in 50 °C, $\lambda_{50}$	0,042 W/mK	EN 12667
Thermal Conductivity in 100 °C, $\lambda_{100}$	0,047 W/mK	EN 12667
Thermal Conductivity in 200 °C, $\lambda_{200}$	0,063 W/mK	EN 12667
Thermal Conductivity in 300 °C, $\lambda_{300}$	0,083 W/mK	EN 12667
Thermal Conductivity in 400 °C, $\lambda_{400}$	0,110 W/mK	EN 12667
Thermal Conductivity in 500 °C, $\lambda_{500}$	0,142 W/mK	EN 12667

### Moisture Properties

Description	Value	In accordance with
-------------	-------	--------------------

Short Term Water Absorption (Declared), WS, W <sub>p</sub>	≤1,0 kg/m <sup>2</sup>	EN 1609
---	------------------------	---------

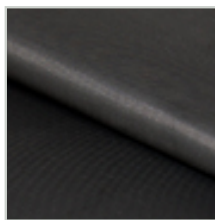
## Facings



AluCoat



G1



G2



G3